




# Martin Fire ESR Treatments

Elko District Office

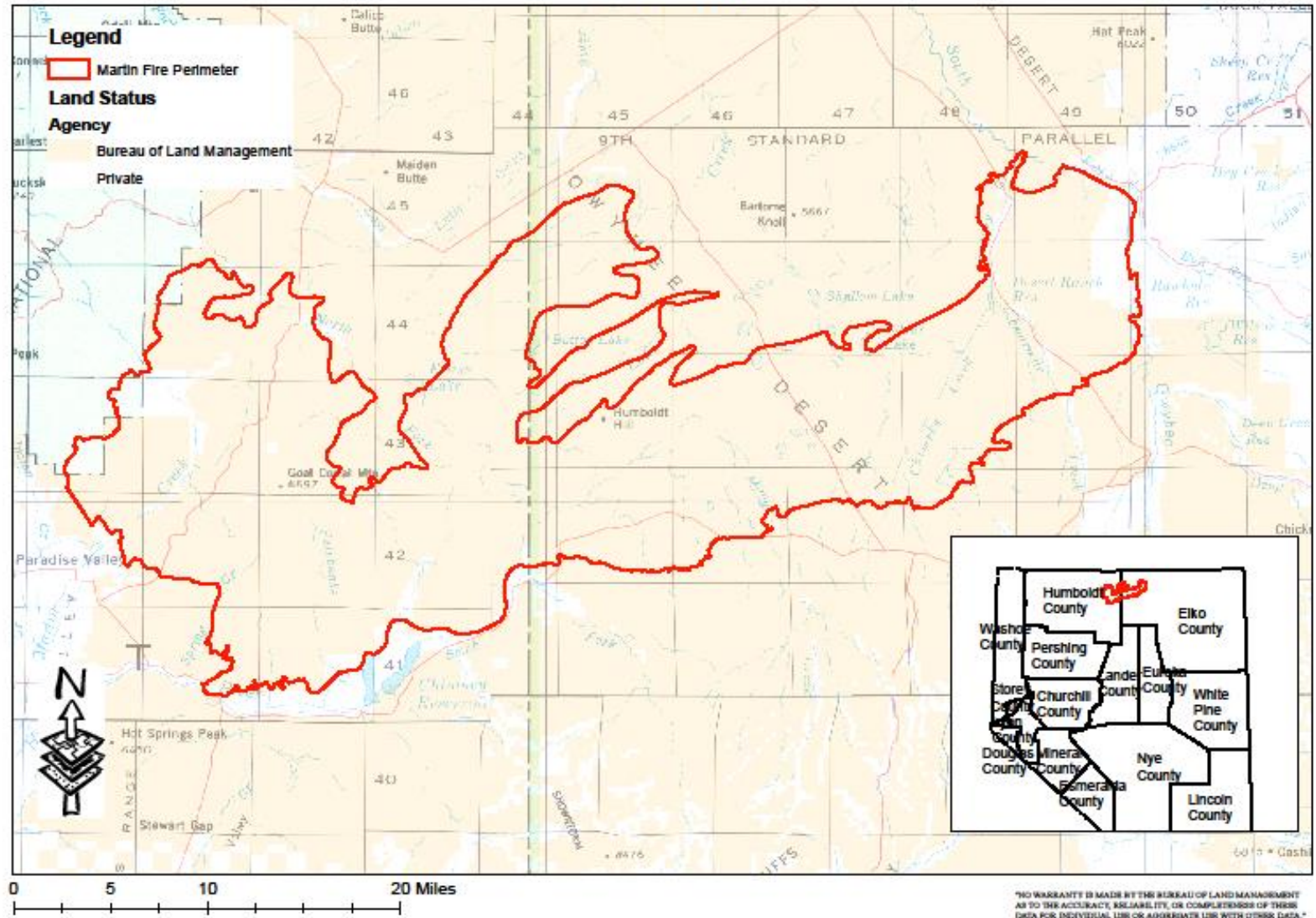


# Martin Fire- Elko District

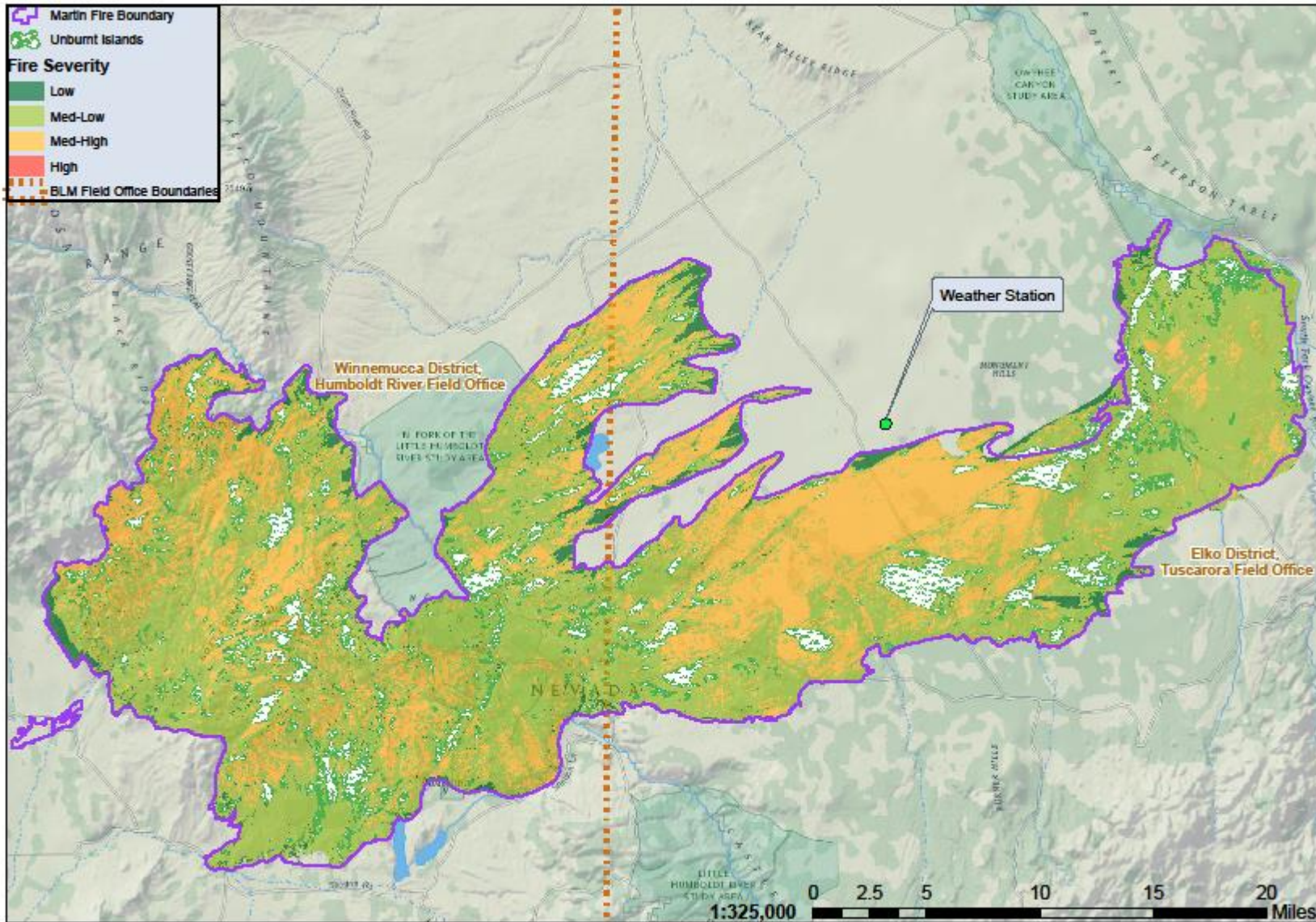
- 435,569 acres
- Human Caused
- Started on July 4<sup>th</sup>, Contained on July 21<sup>st</sup>
- Elko District: 117,857 acres total
  - Public 108,883 acres and Private 8,974 acres

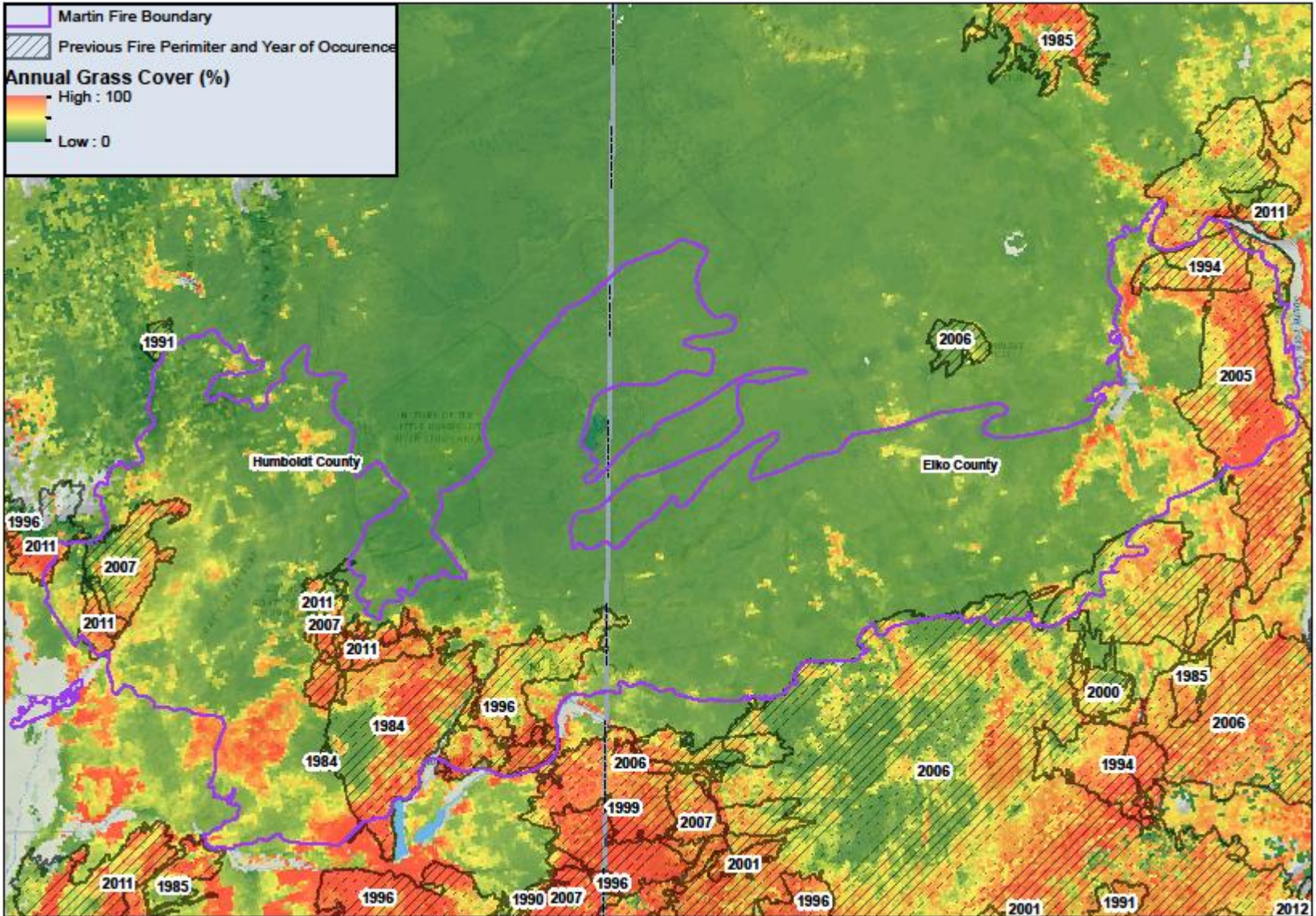
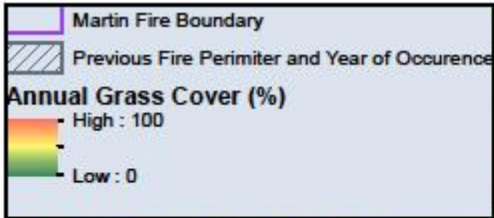


# 2018 Martin Fire Nevada



NO WARRANTY IS MADE BY THE BUREAU OF LAND MANAGEMENT AS TO THE ACCURACY, RELIABILITY, OR COMPLETENESS OF THESE DATA FOR INDIVIDUAL USE OR AGGREGATE USE WITH OTHER DATA.



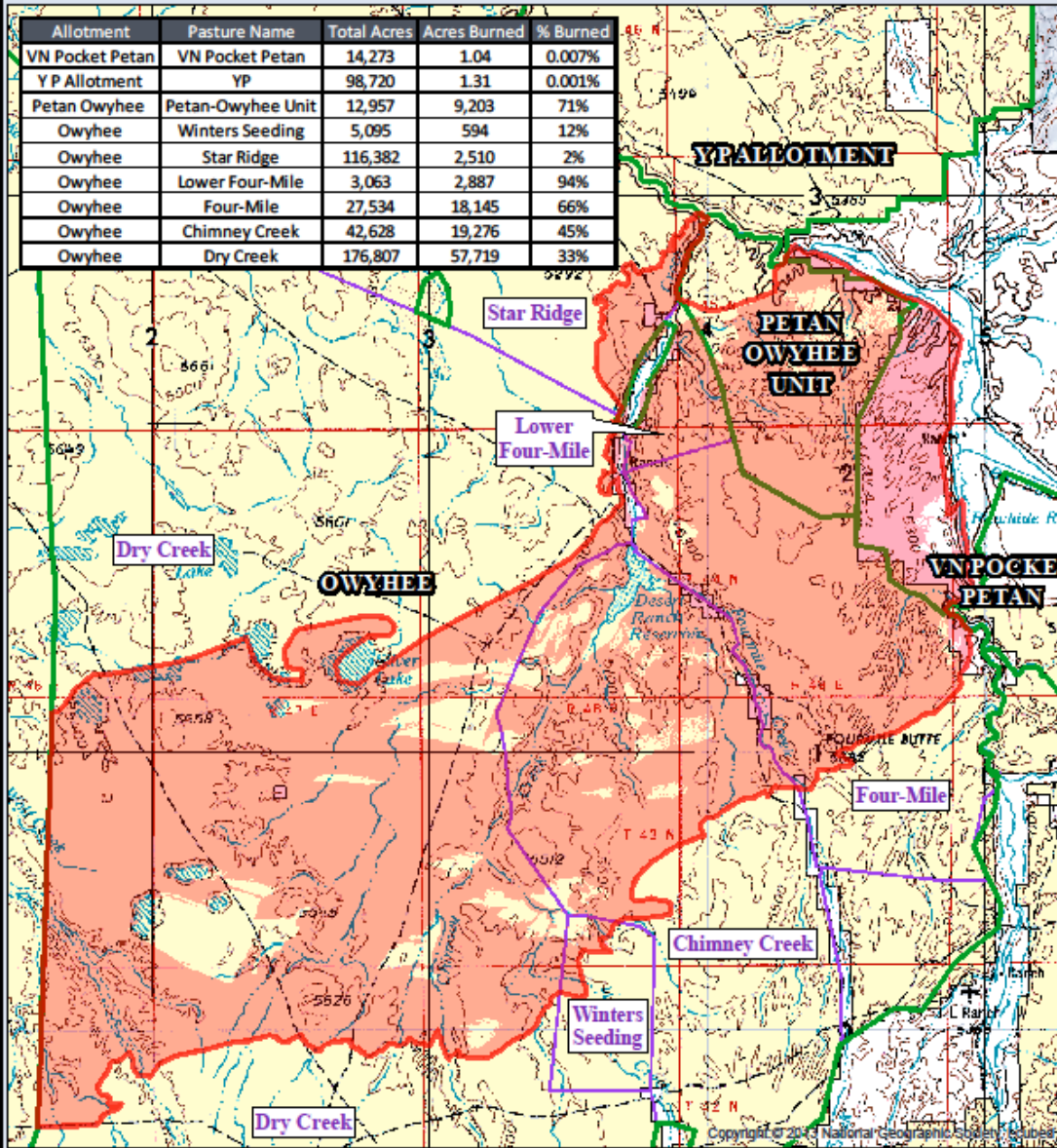




# 2018 Martin (East) Fire

## Allotment & Pasture Boundaries

Allotment	Pasture Name	Total Acres	Acres Burned	% Burned
VN Pocket Petan	VN Pocket Petan	14,273	1.04	0.007%
Y P Allotment	YP	98,720	1.31	0.001%
Petan Owyhee	Petan-Owyhee Unit	12,957	9,203	71%
Owyhee	Winters Seeding	5,095	594	12%
Owyhee	Star Ridge	116,382	2,510	2%
Owyhee	Lower Four-Mile	3,063	2,887	94%
Owyhee	Four-Mile	27,534	18,145	66%
Owyhee	Chimney Creek	42,628	19,276	45%
Owyhee	Dry Creek	176,807	57,719	33%



LEGEND

- Fire Perimeter (EKDO) Land Status
- Grazing Allotment
- Allotment Pasture
- Public
- Private

Data Published in:  
North American Datum 1983 (NAD83)  
UTM Coordinates, Zone 11, Meters

0 1 2 3 4  
Miles



UNITED STATES  
DEPARTMENT OF THE INTERIOR  
BUREAU OF LAND MANAGEMENT  
BLM DISTRICT OFFICE



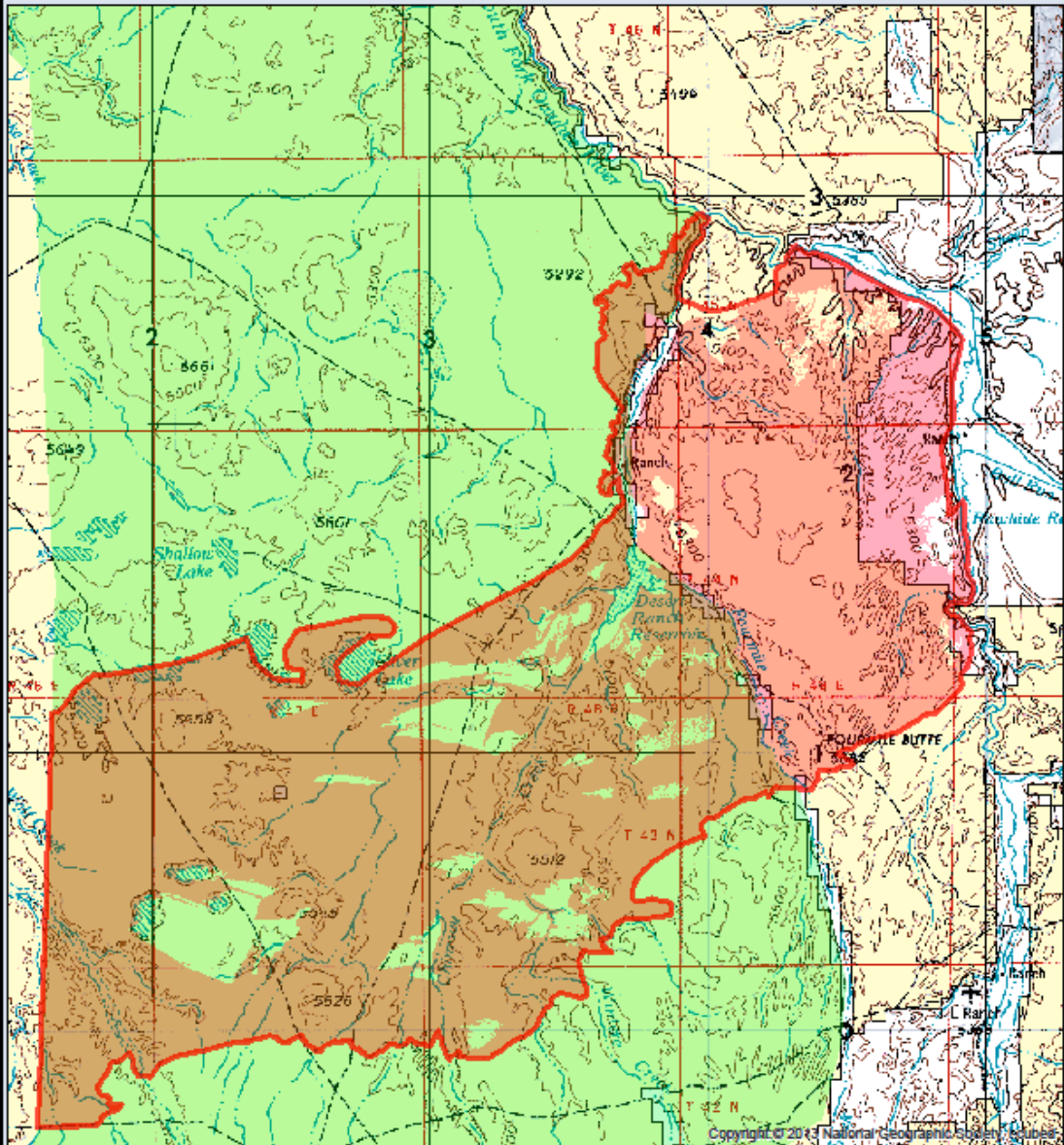
"NO WARRANTY IS MADE BY THE BUREAU OF LAND MANAGEMENT AS TO THE ACCURACY, RELIABILITY, OR COMPLETENESS OF THESE DATA FOR INDIVIDUAL USE OR AGGREGATE USE WITH OTHER DATA."







# 2018 Martin (East) Fire

## Owyhee HMA

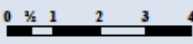
HMA Name	HMA Acres	Acres Burned	% Burned
Owyhee	339,105	80,166	24%



LEGEND

-  Fire Perimeter (EKDO)
-  Herd Management Area
-  Public
-  Private

Data Published in:  
 North American Datum 1983 (NAD83)  
 UTM Coordinates, Zone 11, Meters



Miles



UNITED STATES  
 DEPARTMENT OF THE INTERIOR  
 BUREAU OF LAND MANAGEMENT  
 ELKO DISTRICT OFFICE



\*NO WARRANTY IS MADE BY THE BUREAU OF LAND MANAGEMENT AS TO THE ACCURACY, RELIABILITY, OR COMPLETENESS OF THESE DATA FOR INDIVIDUAL USE OR AGGREGATE USE WITH OTHER DATA.\*



# 2018 Martin (East) Fire

## Sage-grouse Habitat, SFA, & Leks



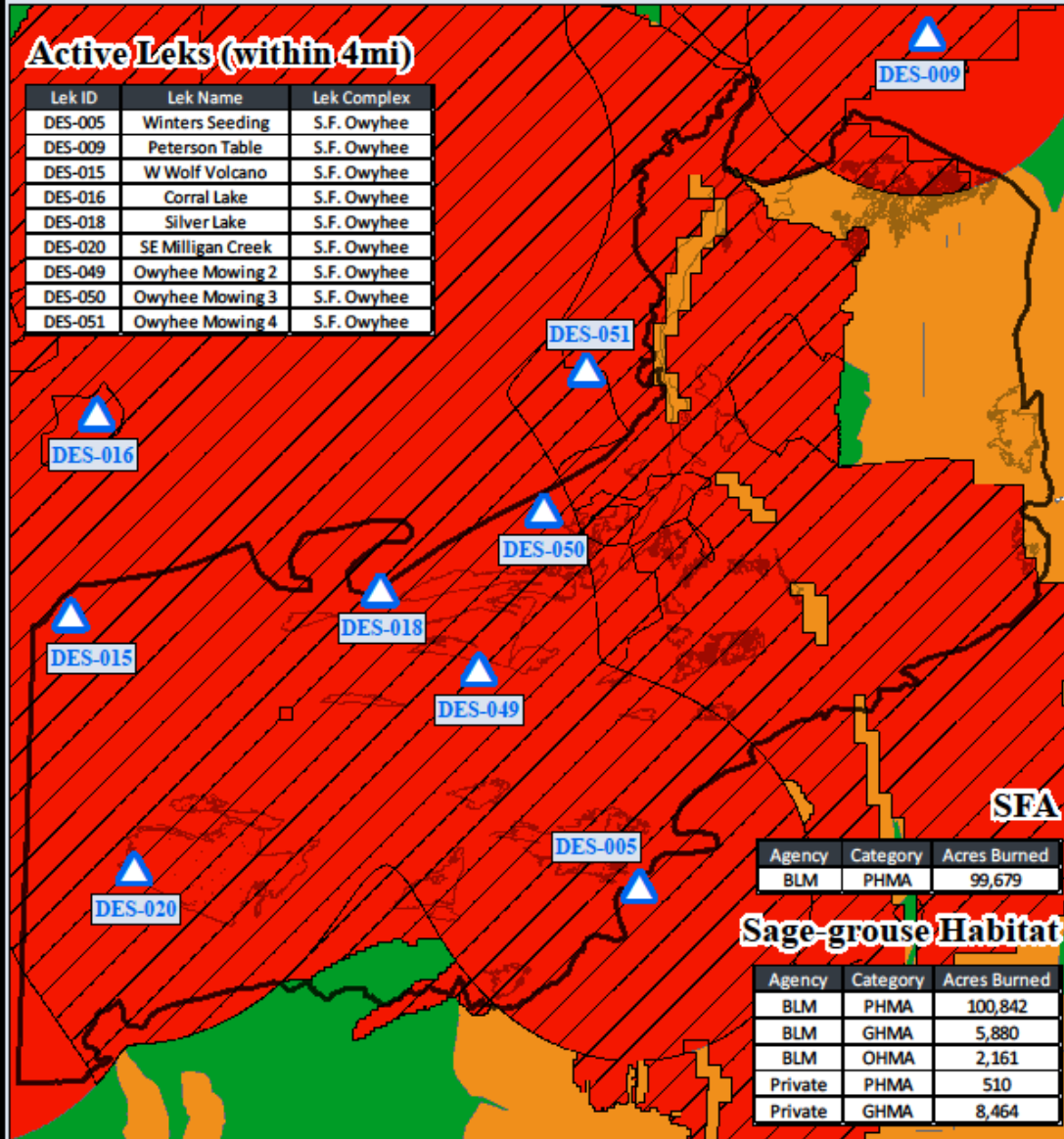
UNITED STATES  
DEPARTMENT OF THE INTERIOR  
BUREAU OF LAND MANAGEMENT  
ELKO DISTRICT OFFICE



\*NO WARRANTY IS MADE BY THE BUREAU OF LAND MANAGEMENT AS TO THE ACCURACY, RELIABILITY, OR COMPLETENESS OF THESE DATA FOR INDIVIDUAL USE OR AGGREGATE USE WITH OTHER DATA.\*

### Active Leks (within 4mi)

Lek ID	Lek Name	Lek Complex
DES-005	Winters Seeding	S.F. Owyhee
DES-009	Peterson Table	S.F. Owyhee
DES-015	W Wolf Volcano	S.F. Owyhee
DES-016	Corral Lake	S.F. Owyhee
DES-018	Silver Lake	S.F. Owyhee
DES-020	SE Milligan Creek	S.F. Owyhee
DES-049	Owyhee Mowing 2	S.F. Owyhee
DES-050	Owyhee Mowing 3	S.F. Owyhee
DES-051	Owyhee Mowing 4	S.F. Owyhee



Agency	Category	Acres Burned
BLM	PHMA	99,679

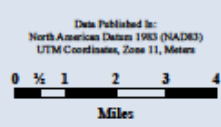
### Sage-grouse Habitat

Agency	Category	Acres Burned
BLM	PHMA	100,842
BLM	GHMA	5,880
BLM	OHMA	2,161
Private	PHMA	510
Private	GHMA	8,464

LEGEND

- Fire Perimeter (EKDO)
- Active Leks
- Sagebrush Focal Area

- #### Sage-grouse Management Categories
- Priority Habitat Management Area
  - General Habitat Management Area
  - Other Habitat Management Area







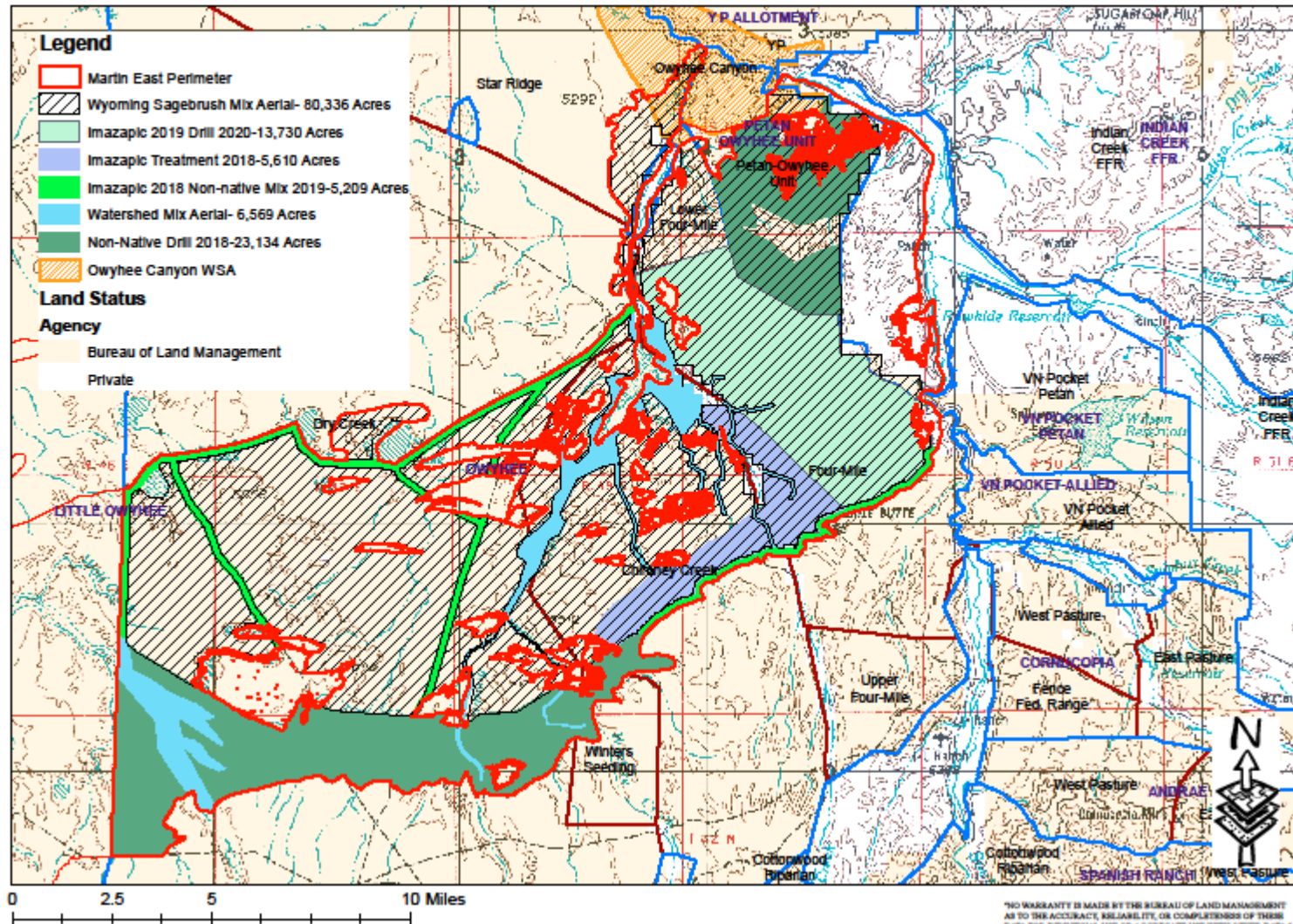
# Cooperators

- BLM ID Team\*
- Permittee's for the Owyhee Allotment and Petan-Owyhee Allotment
- UNR- Tamzen Stringham & Lucas Phipps
- Nevada Department of Wildlife\*
- Nevada Department of Agriculture\*
- U.S. Fish and Wildlife Service\*
- Nevada Division of Forestry
- Nevada Cattleman's Association
- National Weather Service

\* Indicates ID Team for plan



# 2018 Martin (East) Fire Treatments

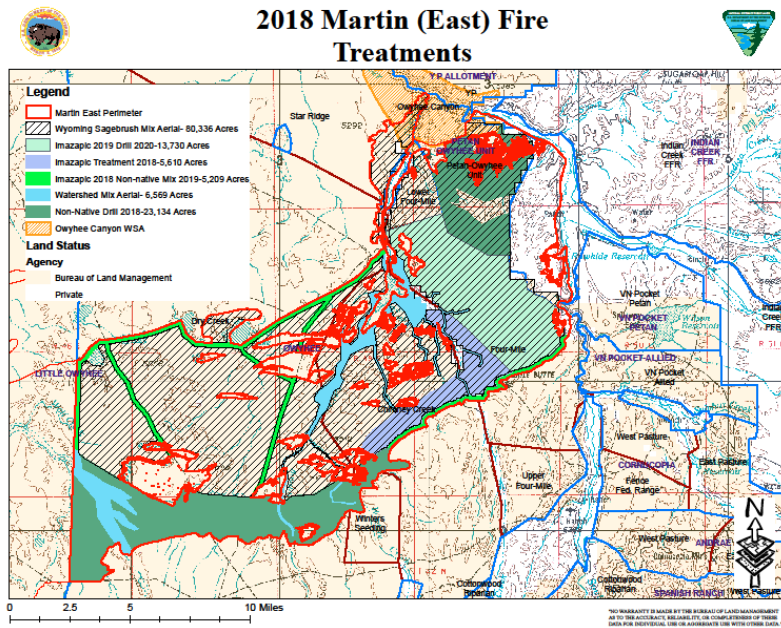


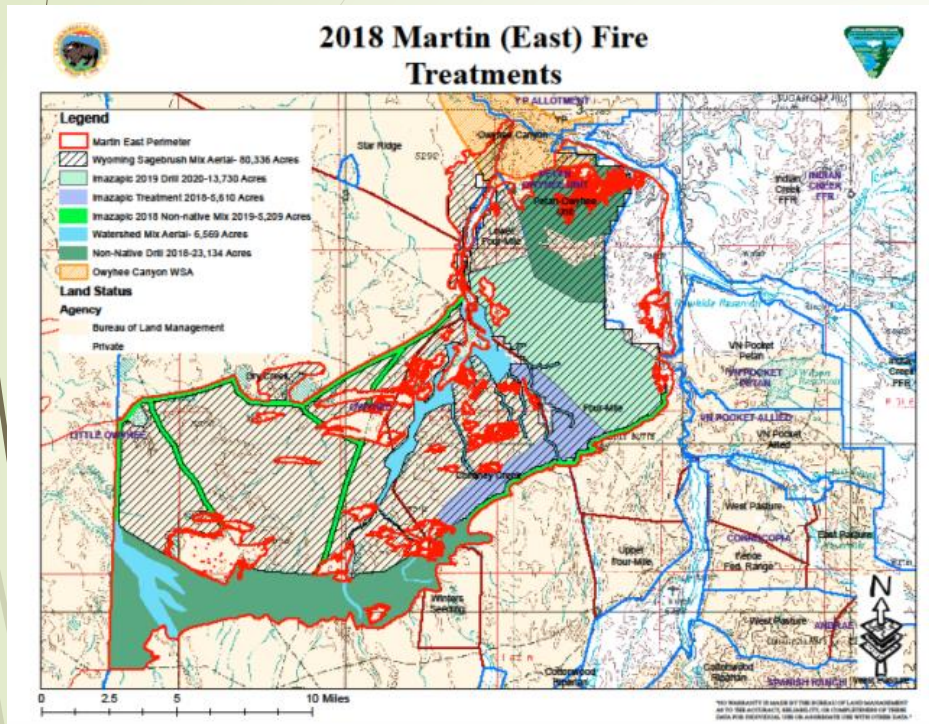
NO WARRANTY IS MADE BY THE BUREAU OF LAND MANAGEMENT AS TO THE ACCURACY, RELIABILITY, OR COMPLETENESS OF THESE DATA FOR INDIVIDUAL USE OR AGGREGATED USE WITH OTHER DATA.

## 2018:

- Horse gather in conjunction with Winnemucca
- Imazapic fuel breaks (5,209 acres) and southeast section of the Four-Mile pasture (5,610 acres) and southern edge of the Chimney Creek pasture
- Drill seed approximately 23,134 acres in the southern edge of the Dry Creek pasture and the Petan-Owyhee Unit with Siberian Wheatgrass, Russian wildrye, Sandberg's bluegrass, and Sanfoin
- Aerial seed approximately 80,336 acres of the fire with Wyoming big sagebrush and Western Yarrow
- Aerial seed approximately 6569 acres of drainages/watersheds with Great Basin wildrye, Thickspike wheatgrass, Snake River wheatgrass, and Basin big sagebrush

### 2018 Martin (East) Fire Treatments

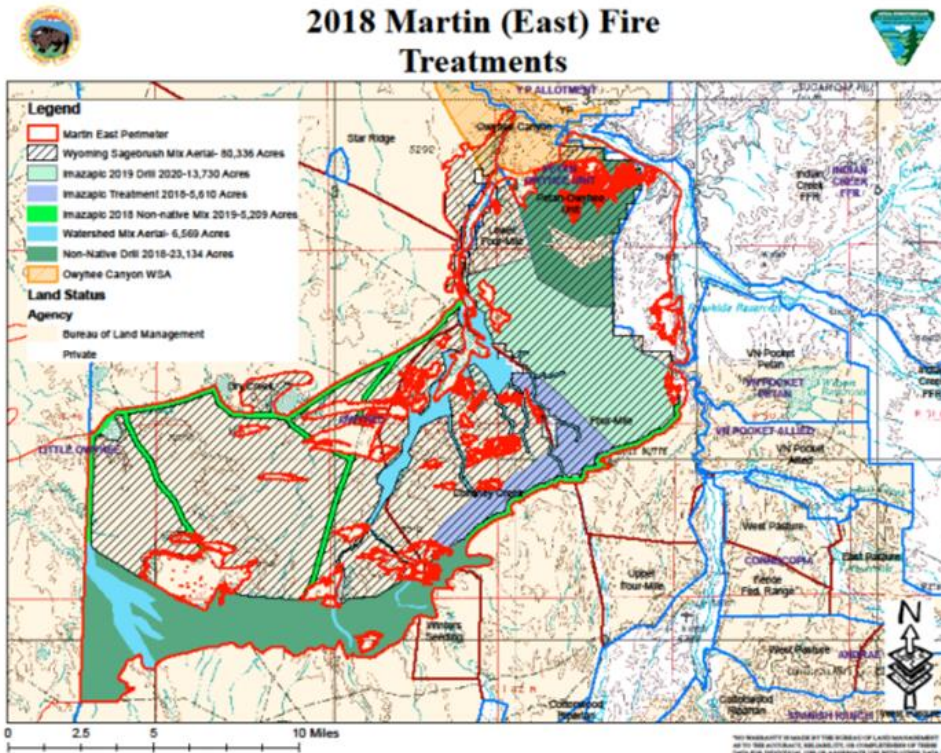




## 2019:

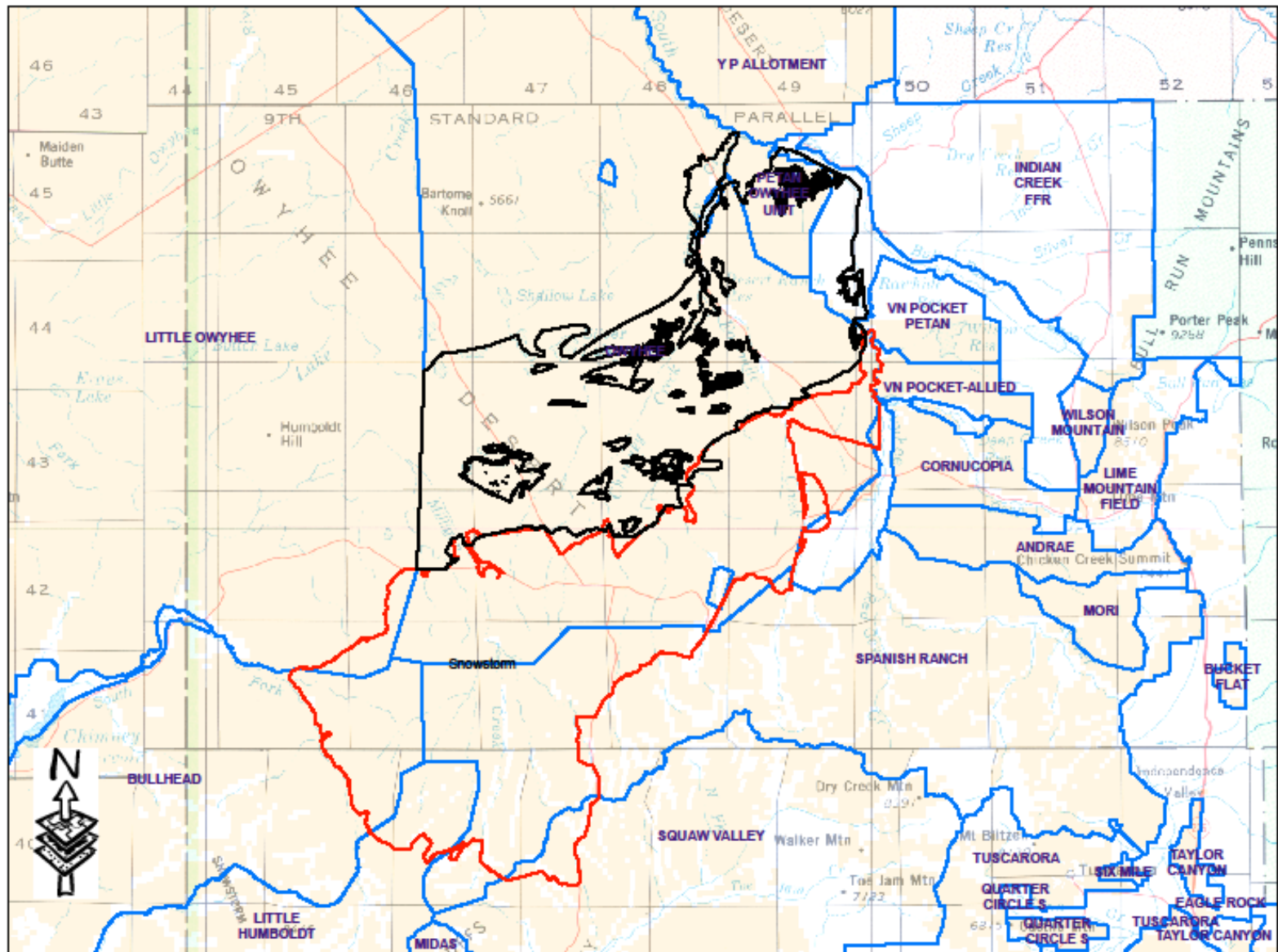
- Graze the Four-Mile pasture, fall Imazapic treatment for approximately 13,730 acres
- Drill seed approximately 5209 acres of fuel breaks with Siberian wheatgrass, Russian wildrye, Sandberg's bluegrass, and Sanfoin
- Monitor treatment and natural recovery from 2018: if we need to add/change treatments the plan allows us flexibility

## 2018 Martin (East) Fire Treatments



## 2020

- Drill seed Four-Mile pasture with Siberian wheatgrass, Russian wildrye, Sandberg's bluegrass, and Sanfoin



NO WARRANTY IS MADE BY THE BUREAU OF LAND MANAGEMENT AS TO THE ACCURACY, RELIABILITY, OR COMPLETENESS OF THESE DATA FOR INDIVIDUAL USE OR AGGREGATE USE WITH OTHER DATA.



*Thank You*